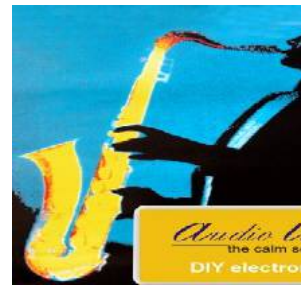


Audio Intense - DIY electronic kits



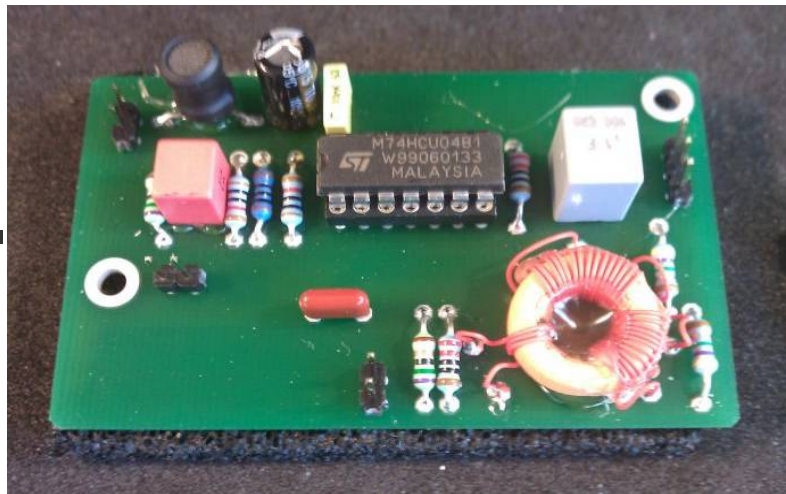
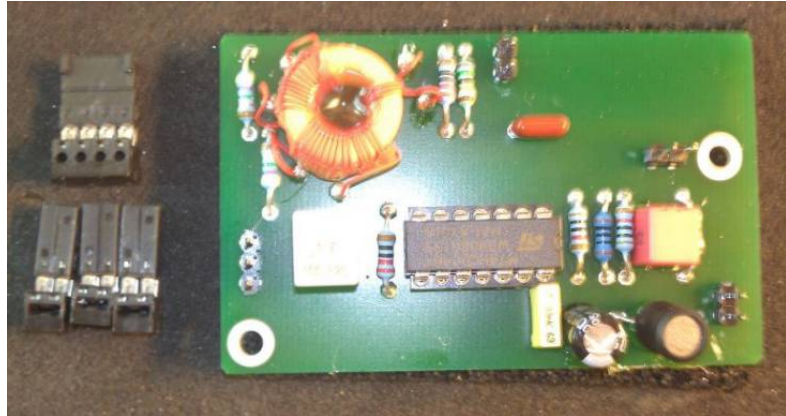
digital out



What does the digital out put do: The output stage is a stabiliser to the s/pdif or AES/EBU signal for driving long lines and make it for the stage easier to work. The heart it is the special transformer with silver/teflon wires that we have develop

- Home-DIY-Audio
- Our Credo
- DIY CD-Player kits2
- CD-Pro2LF kits
- ▲
- DAC
- Amplifier
- DIY housings
- downloads
- Evaluation of customers
- Tuning
- news
- impressum
- terms - conditions
- contact

digital output stage



The PCB will be delivered with all connectors.

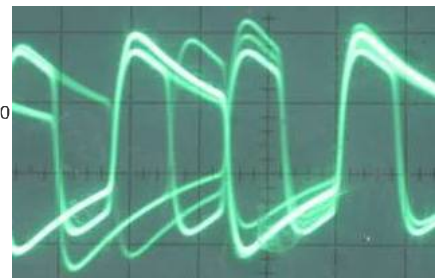
The digital output that comes from the CD-Pro2 or another digital source looks often not as a square wave. This might be a problem of the output transformer.

Our digital output stage will amplify the signal coming from an s/pdif output too TTL signal level than stabilised over a LINE-driver and will be then divided into two separate signal paths with S/PDIF format and AES/EBU format. The output is galvanic decoupled by a special, hand made transformer with high-end powder ring core for digital signals and separate silver wire coils with PTFE isolation for AES/EBU and S/PDIF. With this output stage one can use longer lines without lost of performance and the signal was improved to a real square wave.

Hand made transformer for digital out and other applications:

The handmade transformer has the following advantages: One can use special ferrite powder-ring-core and adapt the meandering of the coils exactly on the circuit.

Output of a Philips CD 940



Output of the CD-Pro2



We use a high quality silver wire with Teflon isolation for the coils. The coils will be glued on the ring.

The Teflon/Silver wire has the following advantages in the opposite of enamelled wire:

- less microphone effects
- The wire is more softly and thus better to process. It puts closely to powder ring. In connection with the gluing a compact unit results.
- A firm magnetic coupling develops also, because nearly the entire magnetic flow implements both windings.



WEEE-Reg.-Nr. DE
85504828

For each task we use special condensers:

Other crucial Components

- For the signal path MKP/FKP condensers of Vishay with small tolerance and outstanding response.
- For the supporting of voltage supply not-inductive MKT condensers of Philips.
- For the logic circuits special condensers of Panasonic, not-inductively and with special hi characteristics

signal improvement of the digital outpustage with CD-Pro2LF

The original signal from digital out of the Cd-Pro2 looks like this...



This is the improved signal after the digital outout stage. It has better flanks and a higher amplitude.

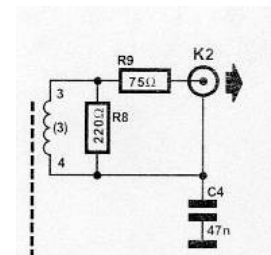


technical data:

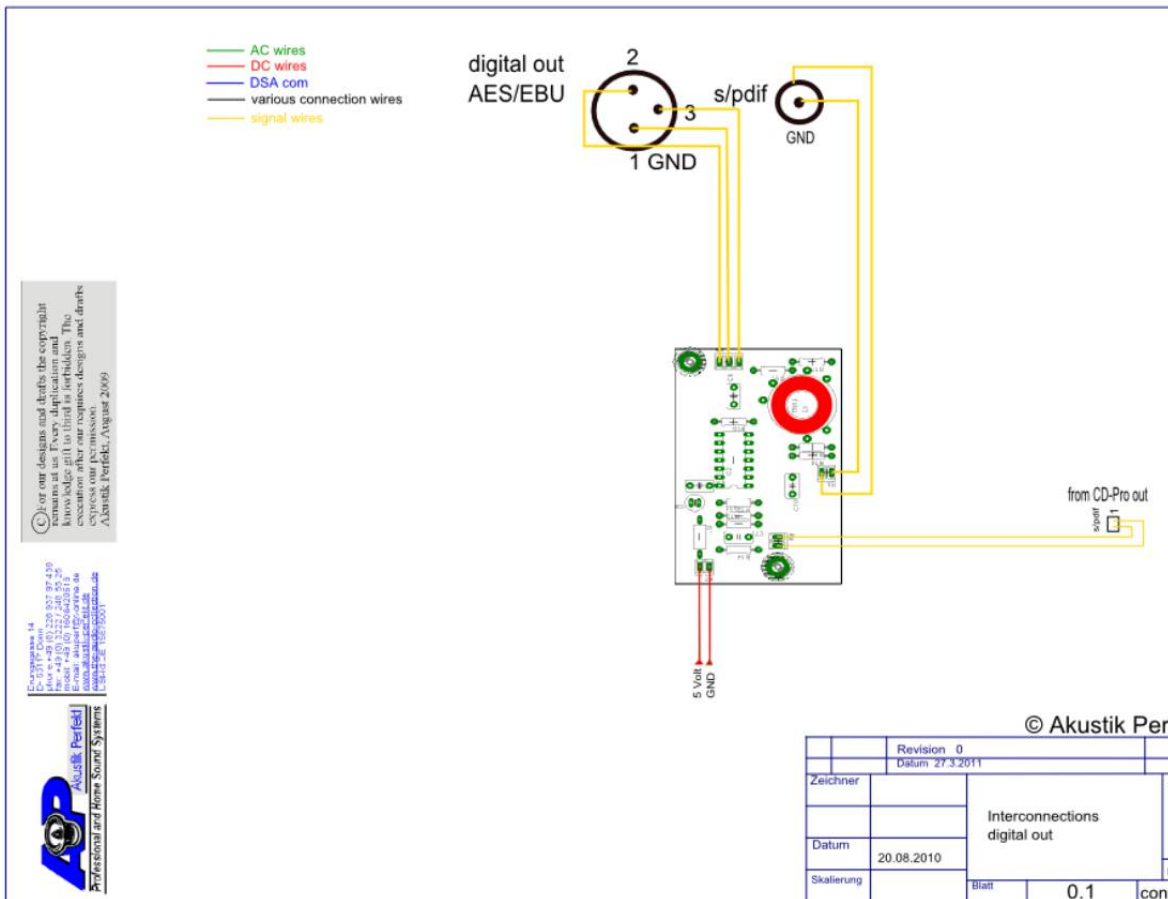
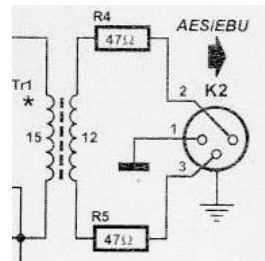
- Measures of the PCB in as-delivered condition: 71 x43 mm
- power supply 5 V
- input 75 R
- output 75 R for s/pdif and 47 R for AES/EBU
- symmetric, unsymmetric output
- s/pdif output format
- AES/EBU output format

output formats

s/pdif format with RCA connector



AES/EBU format with XLR plug



© Akustik Perfekt

Revision 0			
Datum 27.3.2011			
Zeichner		Interconnections digital out	
Datum	20.08.2010		
Skalierung			
		Blatt	0.1
		conn	

You can order the power supply as follows:

- 1.
- 2.
- 3.
- 4.

Layout with schem
PCB s